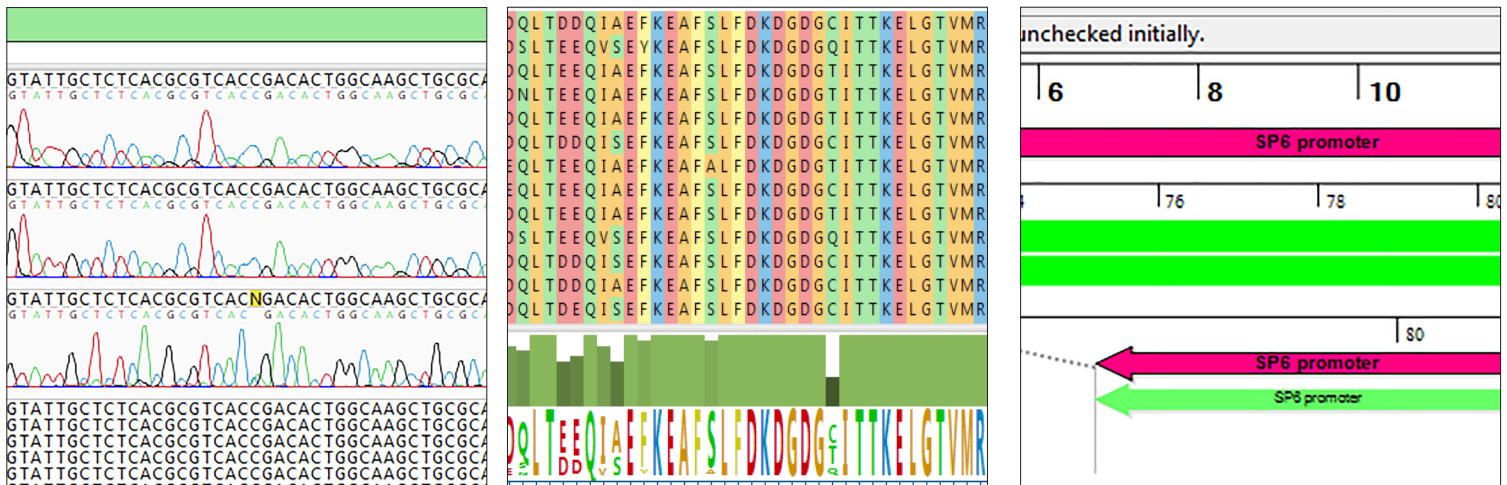


LASERGENE MOLECULAR BIOLOGY FOR STUDENTS AND EDUCATORS

Essential software for sequence analysis is now more easily accessible for students



MULTIPLE SEQUENCE ALIGNMENT

- Many popular multiple and pairwise sequence alignment methods, including MUSCLE, MAFFT, Clustal Omega, Clustal W, and ParaSail
- Whole genome alignment using MAUVE
- Integrated phylogenetic trees using RAxML, for Maximum Likelihood inference and bootstrapping calculations

CLONING AND PRIMER DESIGN

- Support for all major cloning methods, including Gibson Assembly, InFusion, Gateway, Multisite Pro Gateway, TOPO, TA Cloning and restriction enzyme techniques
- Design and customize primers and probes
- Create and share primer catalogs

SANGER SEQUENCE ASSEMBLY

- Assemble reads *de novo* or against one or more reference sequences
- Assess read alignment, coverage and SNPs
- Design sequencing primers to improve coverage
- Easily visualize and compare multiple assemblies in a single project

COMPREHENSIVE SEQUENCE ANALYSIS

- Accurate and fast sequence auto-annotation
- Sequence editing, including automated and batch editing
- Agarose gel simulations
- Gene discovery

SPECIAL OFFERS FOR STUDENTS AND PROFESSORS

Lasergene Student Research Licenses

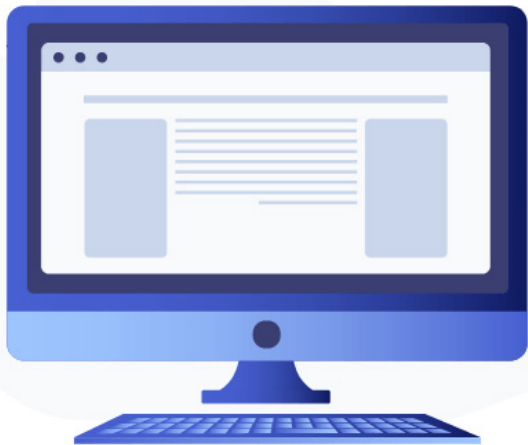
Being a student is hard work. Getting affordable software doesn't have to be.

We're removing the barrier for students to access high quality software so that you can focus on what's more important: your research.

- \$300/year per license
- Available to current undergrad and graduate students
- Includes full Lasergene Molecular Biology package
- Access to self-service technical support
- Available through e-commerce only



Free Educational Licenses for Instructors



Make Lasergene a part of your standard curriculum by taking advantage of our free educational software.

- Available to current professors of undergrad and graduate students
- Requires a current license subscription
- **Free** licenses are provided for each student in the designated class for the duration of the course
- **Free** support for installation and throughout the duration of the course

608.258.7420 tel
866.511.5090 toll free

0.808.234.1643 U.K.
0.800.182.4747 Germany

3801 Regent Street
Madison, WI 53705

www.dnastar.com
info@dnastar.com